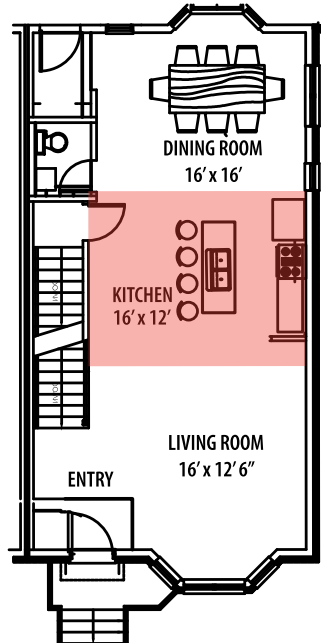
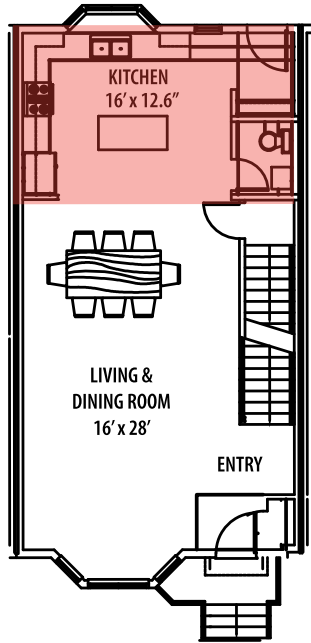


Sitting on the eastern edge of the Cascade District, North Plymouth Terrace provides a great urban experience. With discriminating style and quality you've come to expect from Graywood Custom Homes, these 1800 SQ FT, 2 & 3 Bedroom Townhomes offer the comfort, luxury and amenities of a custom-built home. 10 new townhomes underway will give customers a chance to pick a layout, modify it and choose design details, such as flooring, cabinetry, lighting and more. Ask about the new townhomes and start designing your layout today.

Call us today at 585-738-8889 for more information and a tour.



**1ST FLOOR PLAN LAYOUTS
KITCHEN BACK OR MIDDLE**

1800 SQ FT

2 OR 3 BEDROOM FLOOR PLANS

2 FULL BATHS

1ST FLOOR POWDER ROOM

2ND FLOOR LAUNDRY ROOM

**CERAMIC FLOORING, CARPETING &
HARDWOODS**

PRIVATE COURT YARD

FORMAL DINING ROOM

FULL 12 COURSE BASEMENT

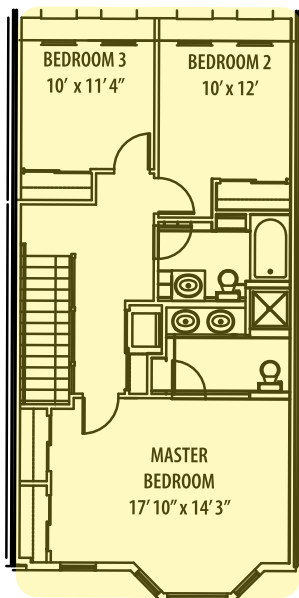
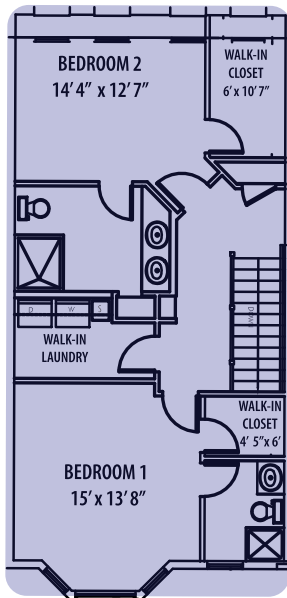
(2) CAR GARAGE

W/COVERED PASSAGEWAY

NO HOMEOWNERS ASSOCIATION

FEEES

35% -40% TAX SAVINGS INCENTIVE



**2ND FLOOR PLAN LAYOUTS
2 OR 3 BEDROOMS**